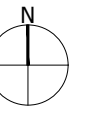






The scaling of this drawing cannot be assured

Revision	Date	Drn	Ckd
F Application Boundary updated	23.08.24	KT	BW




-  Application Boundary
-  Up to 9.5m high (2 storeys). Occasional up to 10.5m high (2.5 storeys) in suitable locations for placemaking purposes.
-  Up to 12m high (3-storeys)
-  Employment area - Up to 12m high

- Notes:-**
- Heights are measured from the highest adjacent finished ground level to the ridge of the roof. In residential areas incidental elements such as chimneys may exceed the ridge by up to 1.5m.
 - Some re-modelling of the existing ground levels will be necessary to achieve appropriate development platforms. Finished ground levels are not known at this stage and these could vary up to +/- 2 metres from the AOD heights shown

Project
**Lower Bullingham
 Hereford**
 Drawing Title
Scale Parameter Plan

Date	Scale	Drawn by	Check by
23.08.24	1:5000 @A3	KT	BW
Project No	Drawing No	Revision	
35304	BL-M-17	F	

0 50 100 150 200 250m



Stantec UK Limited
 10th Floor
 Bank House
 8 Cherry Street
 Birmingham
 B2 5AL
 T: 0121 633 2900
 stantec.com\uk

